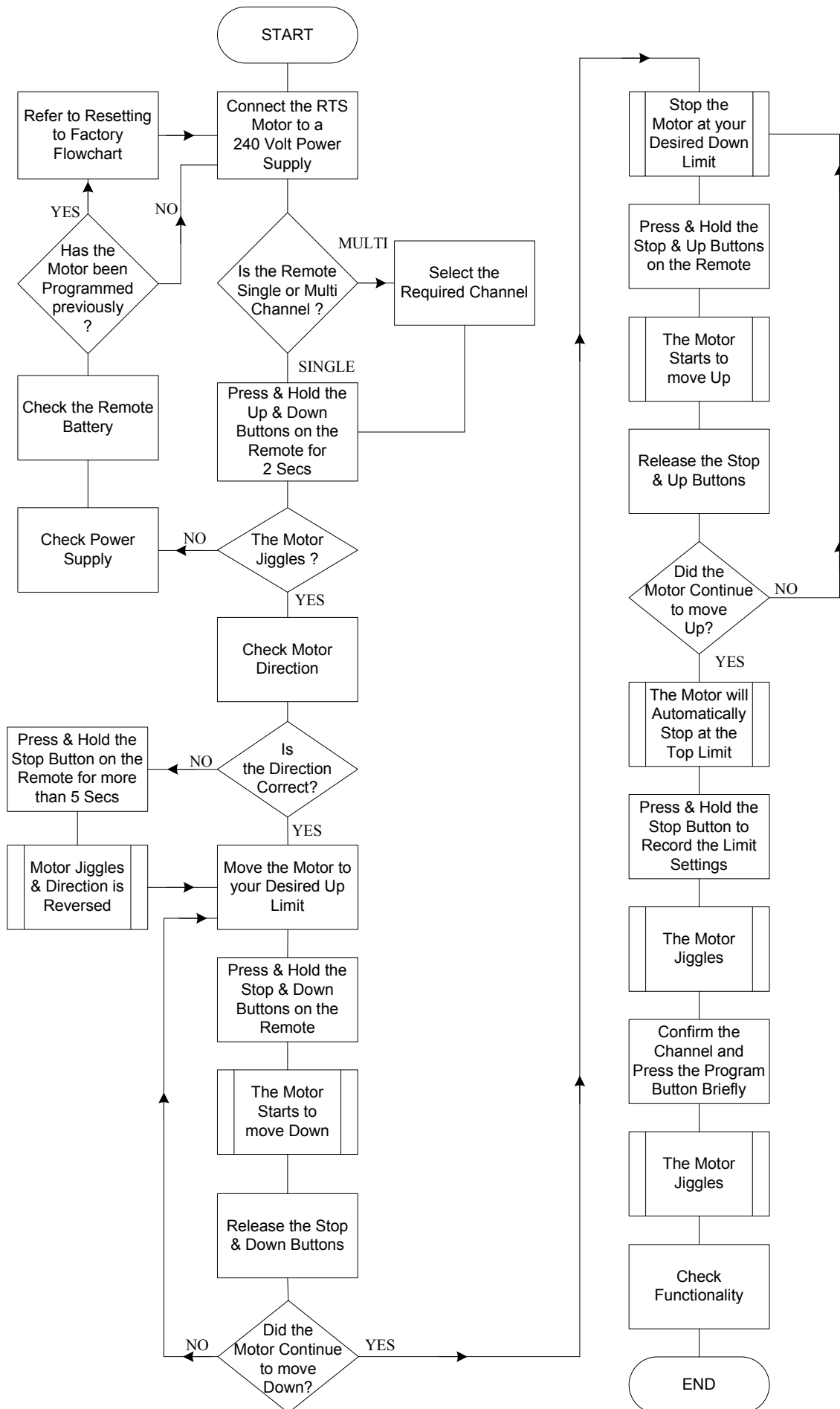


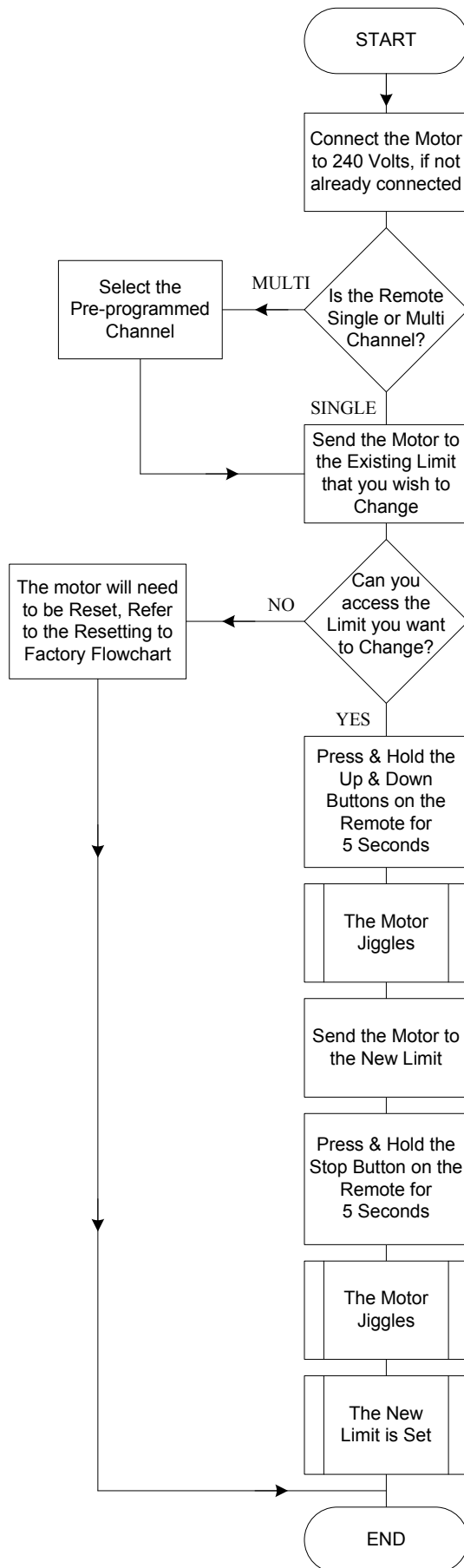
Altus & Orea Programming Flowchart



Changing the Limits for Altus & Orea Motors Flowchart

IMPORTANT NOTE:

This procedure will only work if you have an existing remote that has already been programmed to the motor.



Resetting an Altus or Orea Motor to Factory Mode Flowchart

IMPORTANT NOTE:

This procedure is useful if the existing limits cannot be accessed for adjustment or if a clean start is required. The following will work with any remote.

